

Mirror -1E Exercise

English Measure

© Micro-Press.com. For more exercise drawings, go to www.micro-press.com/Resources.html.

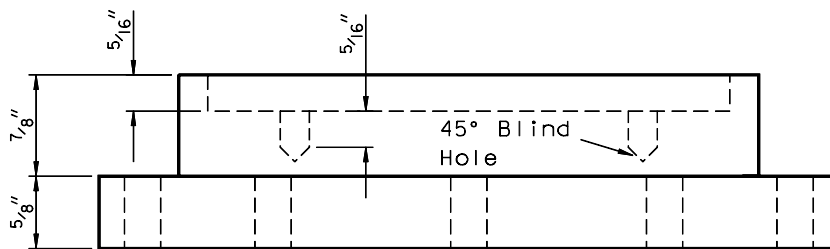
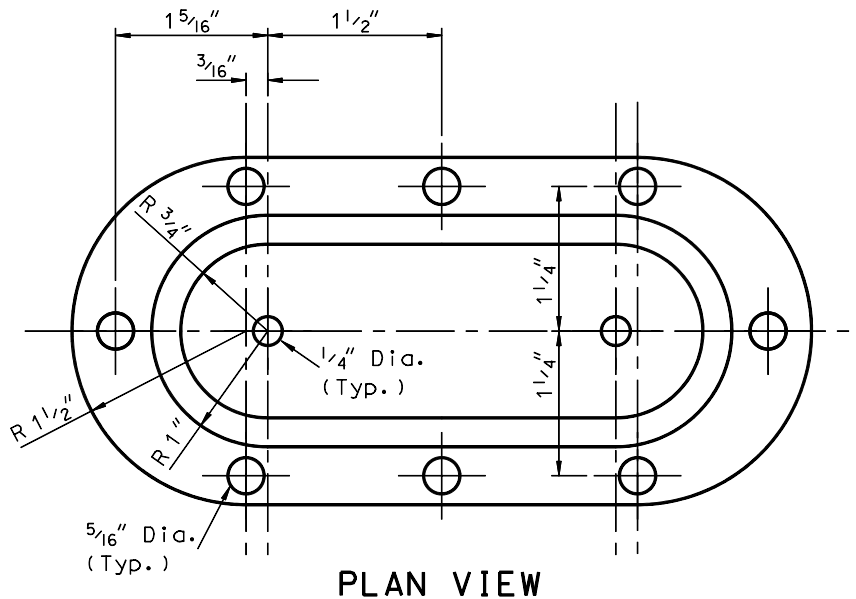
This exercise is best done after completing Module 14 of the MicroStation Training Manual 2D Level 1.

The drawing below shows the layout for a baseplate. Do the following:

- Open a new file called: BASE
- Set Working Units to inches.
- Make any other settings you think necessary.
- Draw the plate to the dimensions shown.

Draw the plate and all center lines, making full use of AccuDraw (do *not* use the Move Parallel tool to offset locations!). Since the object is symmetrical, use the Mirror tool to mirror one half of the plan view. This way, you considerably reduce the drafting time.

Use Accudraw's "O", SmartLock, and "N" keys to develop the Front View from the Plan View. Do *not* use construction lines to extend vertical location information.



Baseplate Layout